

CILINDERS MET BORGMOER

BETEX JLLC serie, hoge tonnage, lastretour, enkelwerkend



50 - 1000

capaciteit ton

50 - 300

slag mm

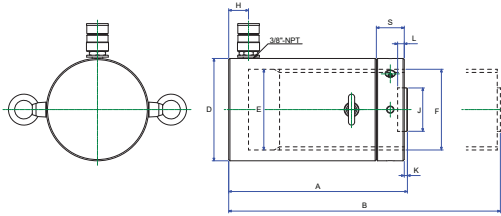
700

max. werkdruk bar

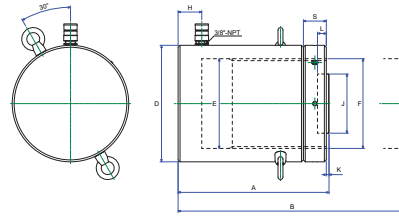
Gebruik in combinatie met onze hydraulische pompen en accessoires.

BETEX JLLC serie

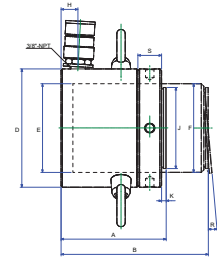
- Alle cilinders zijn enkelwerkend en lastretour.
- Met borgmoer voor mechanisch borgen van het werkstuk gedurende een lange periode.
- Verchroomd om corrosie te voorkomen en om wrijving te beperken voor een betere werking.
- Bestand tegen zijdelingse belasting tot 5% van de aangegeven cilindercapaciteit zonder te krassen.
- Zuigerstop voorkomt doorschieten van zuiger.
- Standaard uitgerust met verwisselbaar, gehard, gegroefd zadel.
- Inclusief high-flow koppeling en stofkap bij alle modellen.
- Inclusief female koppeling en stofkap bij alle modellen.
- Cilinderhuizen zijn gerold, buitenzijde gezandstraald met zwart nitride coating.



Model JLLC 50-200T



Model JLLC 300-1000T



Optioneel kantelend zadel (TSA)

| Type | Cap. ton | Slag mm | Olie cap. cm ³ | Inb. hoogte mm | | D ø mm | E ø mm | F mm | H mm | J mm | K mm | L mm | S mm | Gewicht kg | Optioneel kantelend zadel | | |
|-------------|----------|---------|---------------------------|----------------|------|--------|--------|---------|------|------|------|------|------|------------|---------------------------|-------|----------|
| | | | | A | B | | | | | | | | | | J1 mm | K1 mm | Type |
| | | | | | | | | | | | | | | | | | |
| JLLC 502 | 50 | 50 | 354,5 | 164 | 214 | 125 | 95 | Tr95x4 | 20 | 70 | 4 | 13 | 35 | 15 | 70 | 24 | TSA-100 |
| JLLC 506 | 50 | 150 | 1063,5 | 264 | 414 | 125 | 95 | Tr95x4 | 20 | 70 | 4 | 13 | 35 | 25 | 70 | 24 | TSA-100 |
| JLLC 5010 | 50 | 250 | 1772,5 | 364 | 614 | 125 | 95 | Tr95x4 | 20 | 70 | 4 | 13 | 35 | 35 | 70 | 24 | TSA-100 |
| JLLC 1002 | 100 | 50 | 665 | 187 | 237 | 165 | 130 | Tr130x4 | 32 | 70 | 4 | 13 | 45 | 30 | 70 | 24 | TSA-100 |
| JLLC 1006 | 100 | 150 | 1995 | 287 | 437 | 165 | 130 | Tr130x4 | 32 | 70 | 4 | 13 | 45 | 48 | 70 | 24 | TSA-100 |
| JLLC 10010 | 100 | 250 | 3325 | 387 | 637 | 165 | 130 | Tr130x4 | 32 | 70 | 4 | 13 | 45 | 64 | 70 | 24 | TSA-100 |
| JLLC 1502 | 150 | 50 | 1005 | 209 | 259 | 205 | 160 | Tr160x6 | 49 | 125 | 4 | 25 | 45 | 53 | 125 | 20 | TSA-200 |
| JLLC1506 | 150 | 150 | 3015 | 309 | 459 | 205 | 160 | Tr160x6 | 49 | 125 | 4 | 25 | 45 | 78 | 125 | 20 | TSA-200 |
| JLLC 15012 | 150 | 300 | 6030 | 459 | 759 | 205 | 160 | Tr160x6 | 49 | 125 | 4 | 25 | 45 | 117 | 125 | 20 | TSA-200 |
| JLLC 2002 | 200 | 50 | 1345 | 243 | 293 | 235 | 185 | Tr185x6 | 52 | 125 | 4 | 25 | 50 | 83 | 125 | 20 | TSA-200 |
| JLLC 2006 | 200 | 150 | 4035 | 343 | 493 | 235 | 185 | Tr185x6 | 52 | 125 | 4 | 25 | 50 | 117 | 125 | 20 | TSA-200 |
| JLLC 20012 | 200 | 300 | 8070 | 493 | 793 | 235 | 185 | Tr185x6 | 52 | 125 | 4 | 25 | 50 | 170 | 125 | 20 | TSA-200 |
| JLLC 3002 | 300 | 50 | 2167,5 | 295 | 345 | 305 | 235 | Tr235x6 | 62 | 160 | 5 | 25 | 60 | 173 | 195 | 75 | TSA-300 |
| JLLC 3006 | 300 | 150 | 6502,5 | 395 | 545 | 305 | 235 | Tr235x6 | 62 | 160 | 5 | 25 | 60 | 233 | 195 | 75 | TSA-300 |
| JLLC 30012 | 300 | 300 | 13005 | 545 | 845 | 305 | 235 | Tr235x6 | 62 | 160 | 5 | 25 | 60 | 323 | 195 | 75 | TSA-300 |
| JLLC 4002 | 400 | 50 | 2755 | 335 | 385 | 355 | 265 | Tr265x6 | 76 | 160 | 5 | 25 | 70 | 250 | 225 | 85 | TSA-400 |
| JLLC 4006 | 400 | 150 | 8265 | 435 | 585 | 355 | 265 | Tr265x6 | 76 | 160 | 5 | 25 | 70 | 327 | 225 | 85 | TSA-400 |
| JLLC 40012 | 400 | 300 | 16530 | 585 | 885 | 355 | 265 | Tr265x6 | 76 | 160 | 5 | 25 | 70 | 441 | 225 | 85 | TSA-400 |
| JLLC 5002 | 500 | 50 | 3532,5 | 375 | 425 | 395 | 300 | Tr300x6 | 81 | 180 | 5 | 25 | 80 | 367 | 250 | 90 | TSA-500 |
| JLLC 5006 | 500 | 150 | 10597,5 | 475 | 625 | 395 | 300 | Tr300x6 | 81 | 180 | 5 | 25 | 80 | 466 | 250 | 90 | TSA-500 |
| JLLC 50012 | 500 | 300 | 21195 | 625 | 925 | 395 | 300 | Tr300x6 | 81 | 180 | 5 | 25 | 80 | 617 | 250 | 90 | TSA-500 |
| JLLC 6002 | 600 | 50 | 4274 | 395 | 445 | 425 | 330 | Tr330x6 | 89 | 195 | 5 | 25 | 85 | 446 | 275 | 95 | TSA-600 |
| JLLC 6006 | 600 | 150 | 12823 | 495 | 645 | 425 | 330 | Tr330x6 | 89 | 195 | 5 | 25 | 85 | 562 | 275 | 95 | TSA-600 |
| JLLC 60012 | 600 | 300 | 25646 | 645 | 945 | 425 | 330 | Tr330x6 | 89 | 195 | 5 | 25 | 85 | 737 | 275 | 95 | TSA-600 |
| JLLC 8002 | 800 | 50 | 5970 | 455 | 505 | 505 | 390 | Tr390x6 | 105 | 225 | 5 | 25 | 100 | 709 | 320 | 120 | TSA-800 |
| JLLC 8006 | 800 | 150 | 17910 | 555 | 705 | 505 | 390 | Tr390x6 | 105 | 225 | 5 | 25 | 100 | 870 | 320 | 120 | TSA-800 |
| JLLC 80012 | 800 | 300 | 35820 | 705 | 1005 | 505 | 390 | Tr390x6 | 105 | 225 | 5 | 25 | 100 | 1110 | 320 | 120 | TSA-800 |
| JLLC 10002 | 1000 | 50 | 7257 | 495 | 545 | 555 | 430 | Tr430x6 | 108 | 250 | 5 | 25 | 110 | 949 | 360 | 135 | TSA-1000 |
| JLLC 10006 | 1000 | 150 | 21772 | 595 | 745 | 555 | 430 | Tr430x6 | 108 | 250 | 5 | 25 | 110 | 1141 | 360 | 135 | TSA-1000 |
| JLLC 100012 | 1000 | 300 | 43544 | 745 | 1045 | 555 | 430 | Tr430x6 | 108 | 250 | 5 | 25 | 110 | 1430 | 360 | 135 | TSA-1000 |